

## Project management

### City hotel

**Project type**

new construction, reconstruction

**Location**

Ljubljana, Slovenia

**Surface**

12.000 m<sup>2</sup>

**Year(s)**

2004 - 2007

**Services**

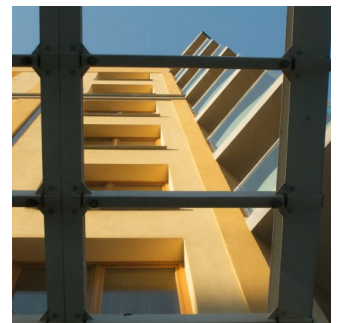
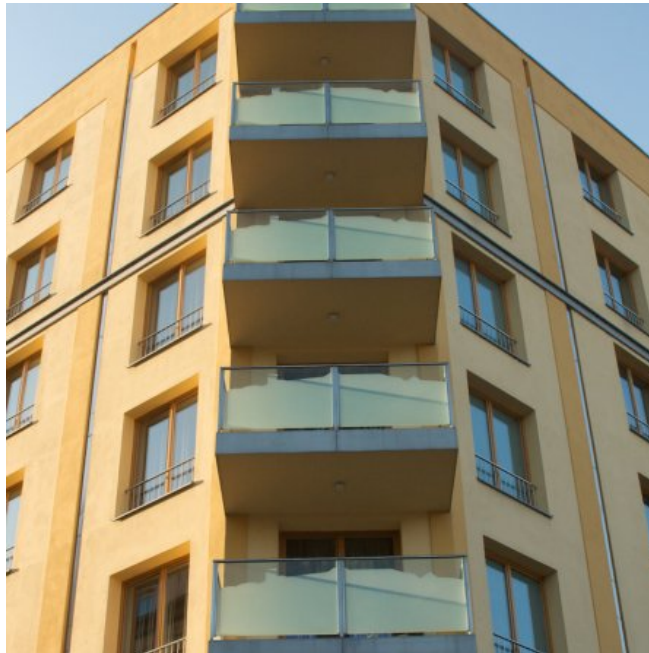
Research of material-technical condition,  
statical analysis  
preliminary design,  
basic design,  
building permit design,  
tender design,  
as built design.

**Architecture**

Matija Suhadolc, BSc in Architecture

**Investor**

Krajc hoteli d.d.



Investor Krajc hoteli d.d. wanted to revitalize an old Štrukelj Hotel. The structure was built in 1900 and later on adapted and superstructured on several occasions. It extends over basement, ground floor and 5 storeys with gross ground plan surface of 540 m<sup>2</sup>. It is now part of the City hotel complex. It is located in the centre of Ljubljana in a series of business - residential buildings. Technical economic analysis gave the real picture on the conditions of the building and based on requested new functional building scheme by the investor and current technical regulations the analysis offered suggestions on necessary measures for the fulfillment of needs and requirements of technical regulations. A comparison of technical measures was also given in case of reconstruction or new construction as well as economic estimation of both variants.