

Tunneling and geotechnics

Suhodol tunnel

Project type

two-pipe, two-line tunnel

Location

Bosnia & Herzegovina

Investment value

70.000.000,00 €

Year(s)

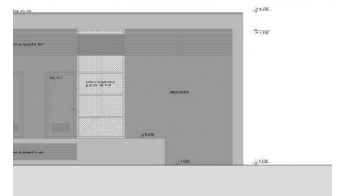
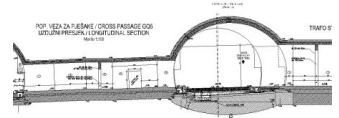
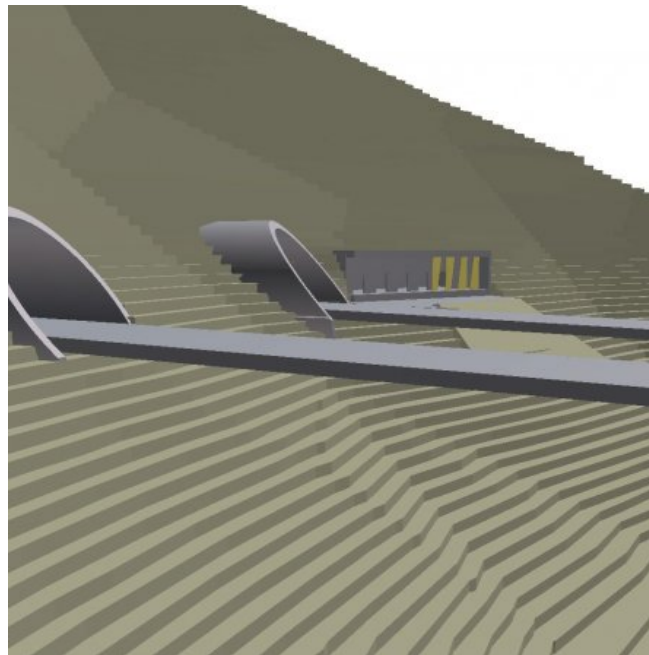
2009 - 2010

Services

basic design,
building permit design,
tender design,
as built design.

Investor

Ministry of Traffic and
Communication, BiH



2.8 km long, 2-lane, 2-tube tunnel Suhodol II is the part of the Vc corridor in BiH (section Lepenica Tarčin). When completed, this corridor will become the main connection between Budapest and Adriatic Sea. The tunnel is placed in geologically diverse rock mass. Various types of rock mass like schist, dolomitized limestone and quartz porphyries compose the area around the tunnel alignment. From geotechnical point of view singular missives (majority of excavation) do not pose threat or complications, however complex parts of fracture zones on contacts and portal areas demand very precise consideration. The tunnel is designed according to the latest recommendations of RVS guidelines (RVS 09-01-24 - September 2009). The tunnel is the part of the tunnel complex. On north side there is a dyke between the tunnels, on the south side the bridge divides the tunnels. Complex terrain morphology on the portals demands special care at the design of the portal areas. The tunnel has 9 pedestrian cross passages (GQ) and 2 cross passages for emergency vehicles (EQ). Along with every EQ cross passage there is also a pair of standard parking bay niches (PBN). Another PBN with power station is placed in the middle of the tunnel. Since there is a vertical alignment inflection point in the tunnel adequate dewatering measures are used. The tunnel has designed longitudinal ventilation, emergency call system, fire fighting hydrants, intelligent traffic control systems, radio signal system, video monitoring and other state of the art equipment.