

## Building structures

### Business commercial centre Portoval

**Location**

Novo mesto, Slovenia

**Surface**

28.000 m<sup>2</sup> total gross

**Investment value**

1.000.000,00 €

**Year(s)**

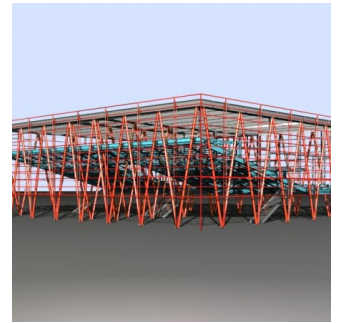
2004

**Services**

building permit design,  
execution design,  
design for electro mechanical  
equipment and installations,  
architecture and landscape design,  
...

**Investor**

Real d.o.o. Novo mesto



The project Portoval represents an alternative approach to the architecture of shopping centers. Its layout is based on the conviction that an appropriate approach can revalue a shopping center beyond the limits of the standard model from an isolated, self-sufficient object that empties and impoverishes the city, into a strategic project that can actively participate in the revival of the city. The entertainment, trade and business center Portoval consists of a multi-cinema, an entertainment center, a supermarket, a multi-purpose store, shops and cafés and a garage. The building has a gross area of 23935 m<sup>2</sup>, of these 15055 m<sup>2</sup> are in the basement. The complex is subdivided into six functionally partitioned units: multicinema, supermarket, passage, store, offices and garage. It is the multicinema that architecturally and constructionally stands out from the rest of the building. It is a steel construction that is virtually divided into a central communication part and two side parts in which the cinema halls are located. The division in the lower part, the foyer, is completely blurred, resulting in a unified space with big spans of the mezzanine construction. The basic architectural demand to create the perception of levitating cinema halls with more than 500 seats could only be realised by an in-depth study of the construction and by the use of innovative approaches to the construction of key details.