

Geology

Elementary school Lavrica

Location

Lavrica, Slovenia

Year(s)

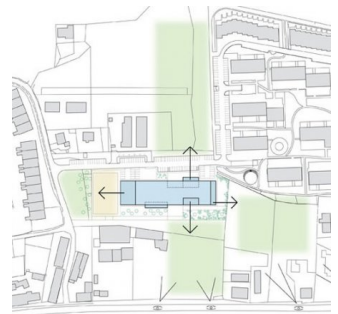
2009

Services

Monitoring the drilling of boreholes and geological inventory of cores, field surveys and sampling, interpretation of laboratory tests, determination of the main geomechanical characteristics of foundation soil, production of geological maps and associated cross sections, foundation proposition.

Investor

Municipality of Škofljica



The studied area is located on the northeastern edge of Ljubljansko moor, between Rudnik and Škofljica. The whole area is built of silty clay to clayed silt, with intermediate sheets of clayed sand and grubble of various thicknesses, which represent the alluvial deposits of the nearby moor tributaries. The geological and geotechnical report was based on the investigations, given the composition of the soil in this area and the conditions of foundation and construction.